

# Invitation for 2nd Public Review & Comment on the ROCOG Draft Year 2040 Long Range Transportation Plan

The federal government requires that metro areas with populations greater than 50,000 update their Long Range Transportation Plan every 5 years, which is now in process.

Here in Olmsted County and Rochester, this effort is coordinated by the Rochester-Olmsted Council of Governments (ROCOG) which is staffed by the Rochester-Olmsted Planning Dept.

The ROCOG planning area includes all of Olmsted County, to include the City of Rochester, along with state and county roads connecting the small cities in the county.

The Plan covers long range System Plans (from about 5 years to 30 years) for 3 major transportation modes:

- Highways, County Roads & Major Streets
- Transit, Paratransit & Rail
- Bike trails and walk-ways

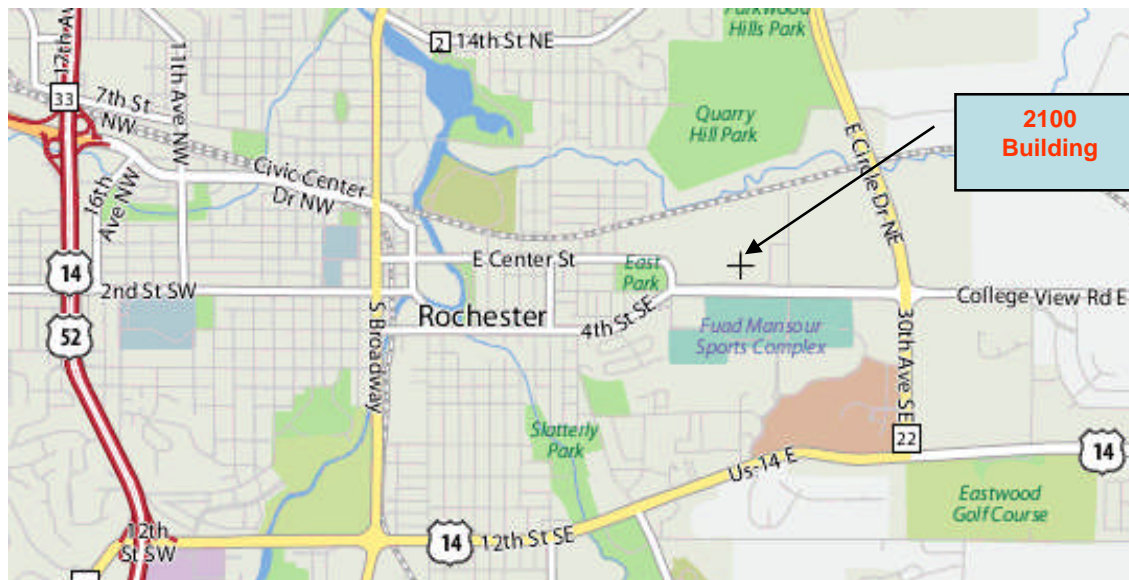
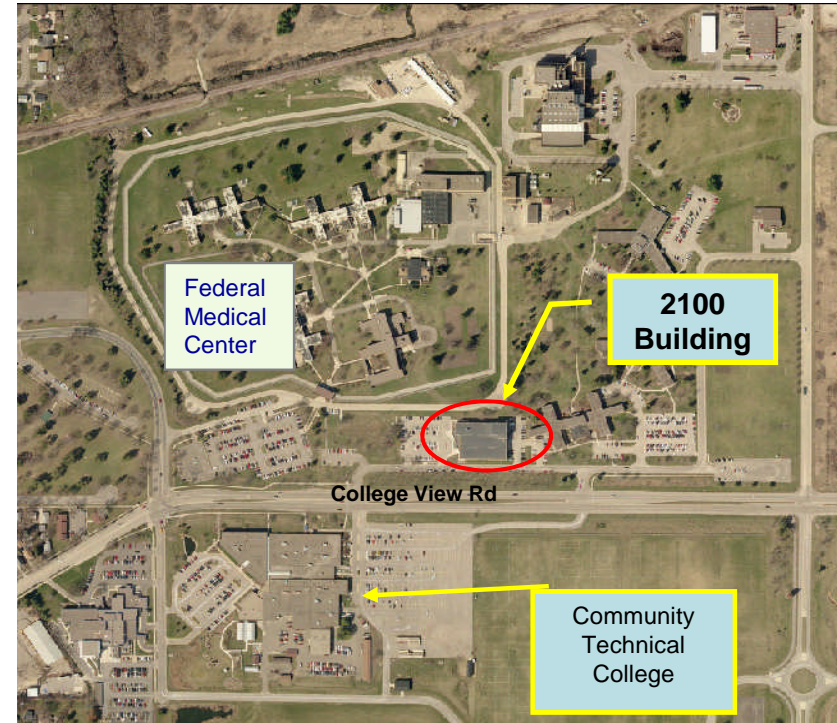
The Internet site showing Plan Update materials can be found at the main Olmsted County Internet site under Land Use & Planning, then Transportation Plans, then ROCOG.

For additional information contact  
ROCOG staff: Dave Pesch  
at (507) 328-7135,  
or Charlie Reiter at 328-7136

or email at:  
[pesch.dave@co.olmsted.mn.us](mailto:pesch.dave@co.olmsted.mn.us)

More on the other side

Meeting Date	Meeting Time	Meeting Type:
May 18 Tuesday	5:00 to 7:00pm  Come and go anytime	<b>Open House with maps &amp; graphics with staff present</b>



Open House will be held in the **Cascade Large Conference Room** in the County Public Health Building #2100:

Building #2100 is located on College View Dr SE as shown on the maps