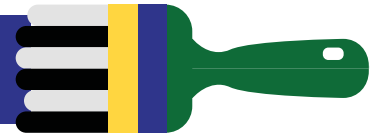
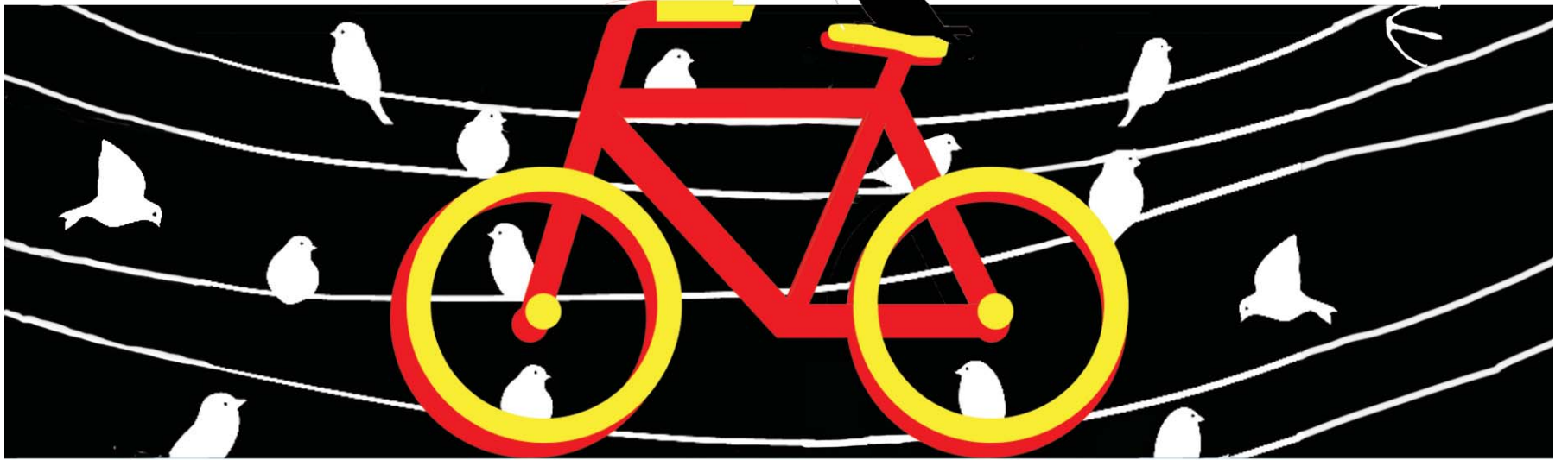


Thursday, September 15, 9 am-Noon

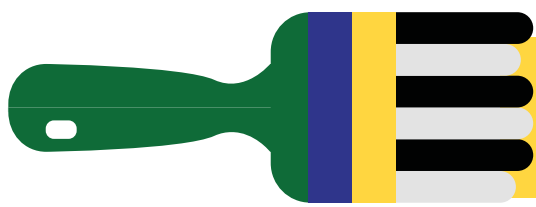
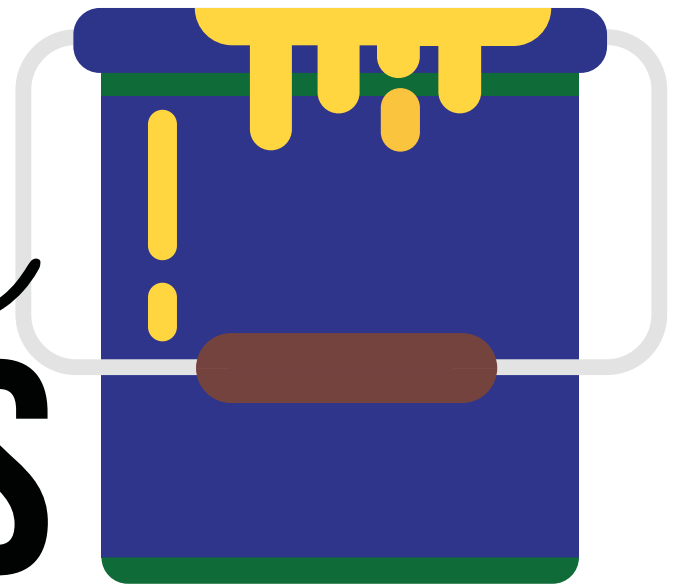


255 1st Ave SW, Downtown Rochester (next to Dooley's)



One of 4 crosswalks designed for this event by Muralist Greg Wimmer.

# Creative CROSSWALKS



Coloring crosswalks for increased visibility

## Volunteers Needed

- What?** We will be painting “Creative Crosswalks” on 1st Avenue downtown as a part of the Placemaking Prototyping Festival and we need your help!
- Where?** Meet us at the intersection next to Dooley’s and stay as long as you can, 15 minutes or all three hours. RNeighbors will provide the brushes and the street paint, you provide the elbow grease.
- Who?** All ages welcome. No artistic experience necessary, it’s like a paint by number.
- Why?** Good question! This project is modeled after similar efforts in other cities. The goal is to bring art to a barren and dull space while at the same time emphasizing safe crosswalks. This crosswalk location is one of the most heavily used pedestrian areas in Rochester.

An neighborhood initiative organized by  
Rochester’s Neighborhood Resource Center

**RNeighbors**  
Providing tools to grow GREAT neighborhoods

Funding provided by

Statewide Health Improvement Program  
**SHIP**  
OLMSTED COUNTY PUBLIC HEALTH

This event is 1 of 16 installations in the  
PlaceMakers Prototype Festival  
September 15-17 at 3rd Street SW by 1st Ave SW, Downtown Rochester, MN.



More info at [RNeighbors.org](http://RNeighbors.org).

